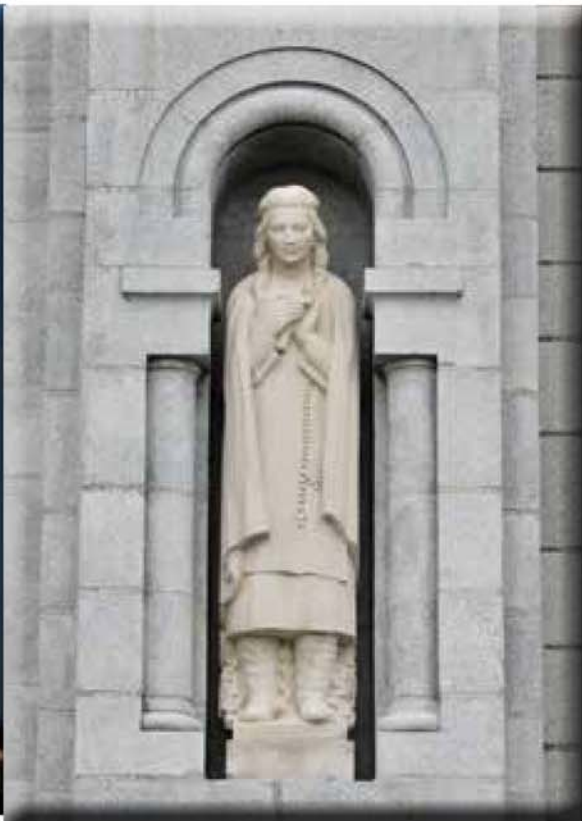
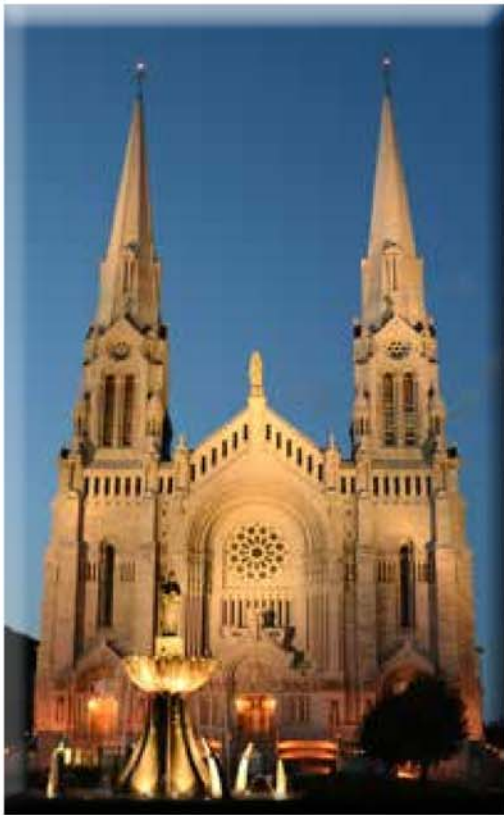
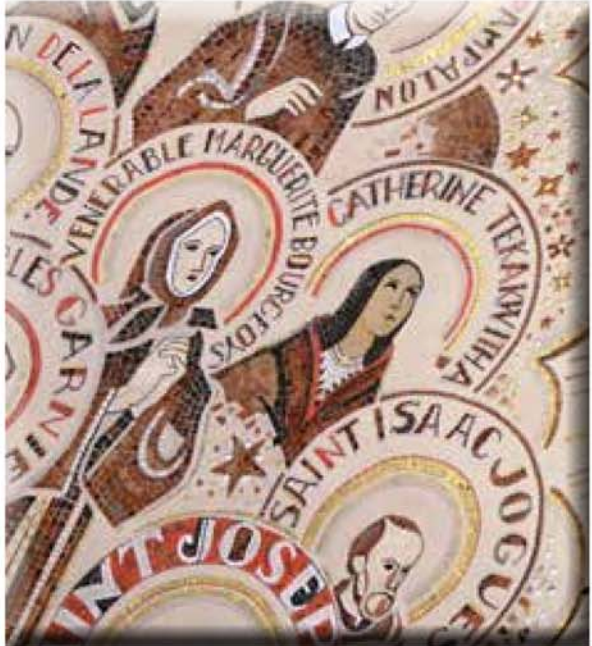


KATERI AT THE ST. ANNE-DE-BEAUPRÉ BASILICA





Top: Close-up of the mosaic on the ceiling representing early Canadian missionaries and Saint Catherine Tekakwitha

Left: Large iconic representation of Kateri on the right side of the Altar area.

*In the Chapel below the Basilica...*



If you know my story, you will remember that as a teenager, I had smallpox and my beautiful child's face remained marked by illness. It hurt me deeply when others stared at me. I wanted to give myself entirely to God but my people did not agree. So I had to leave my country, my homeland and my people, and find refuge in Canada. I could have remained in darkness, but God has made me a light for my people and all nations. When you will be in front of the fresco dedicated to me, meditate on the fact that you will find your true value only in Christ. We all need to love and to be loved, but the source of that love must come from God, and the ensuing torrent of tenderness must flow back to God. Let's remain in communion; in this journey toward mercy, we want to guide you toward love.

